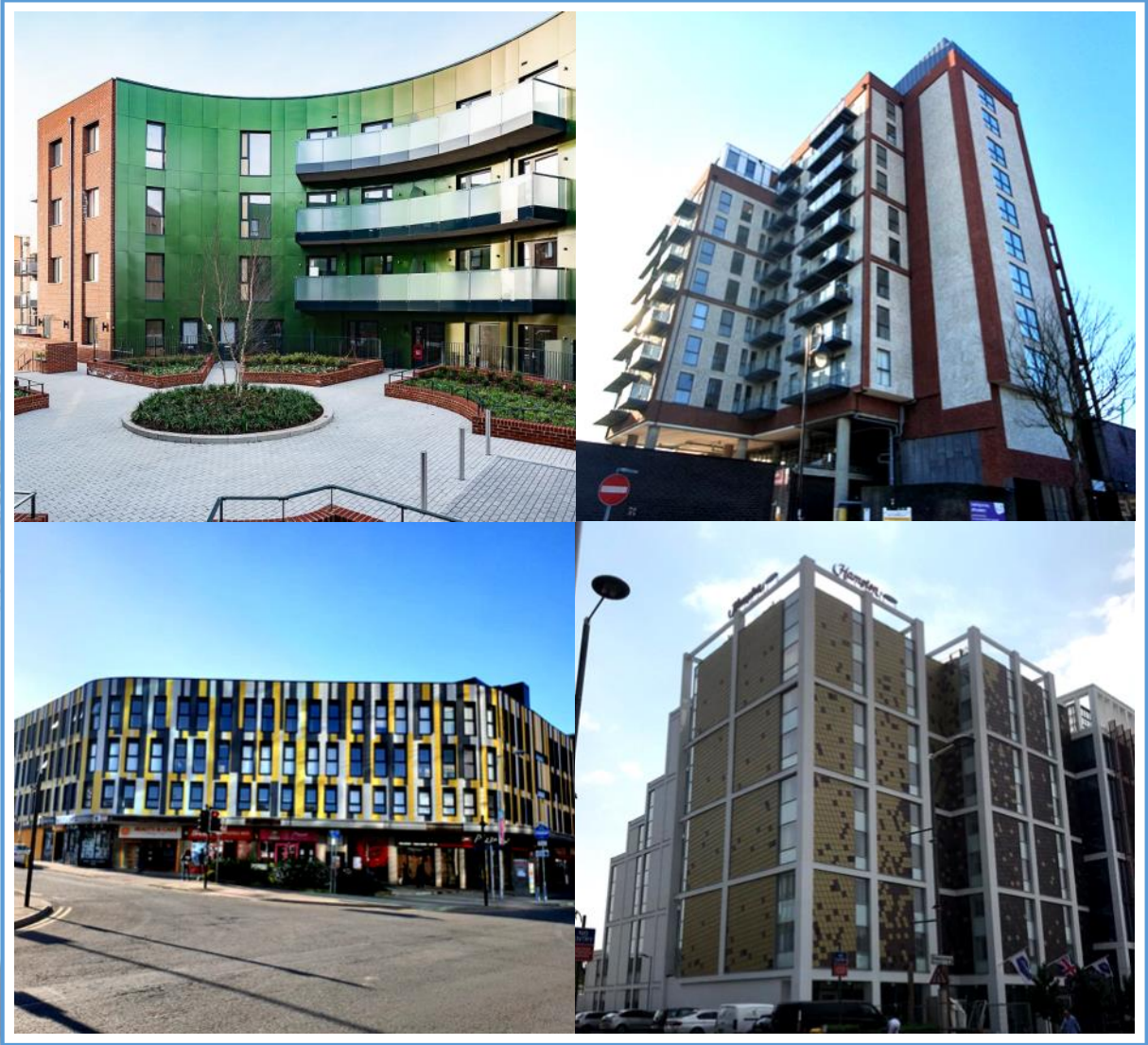


# Green Facades



SPECIALIST EXTERNAL FAÇADE CONTRACTORS





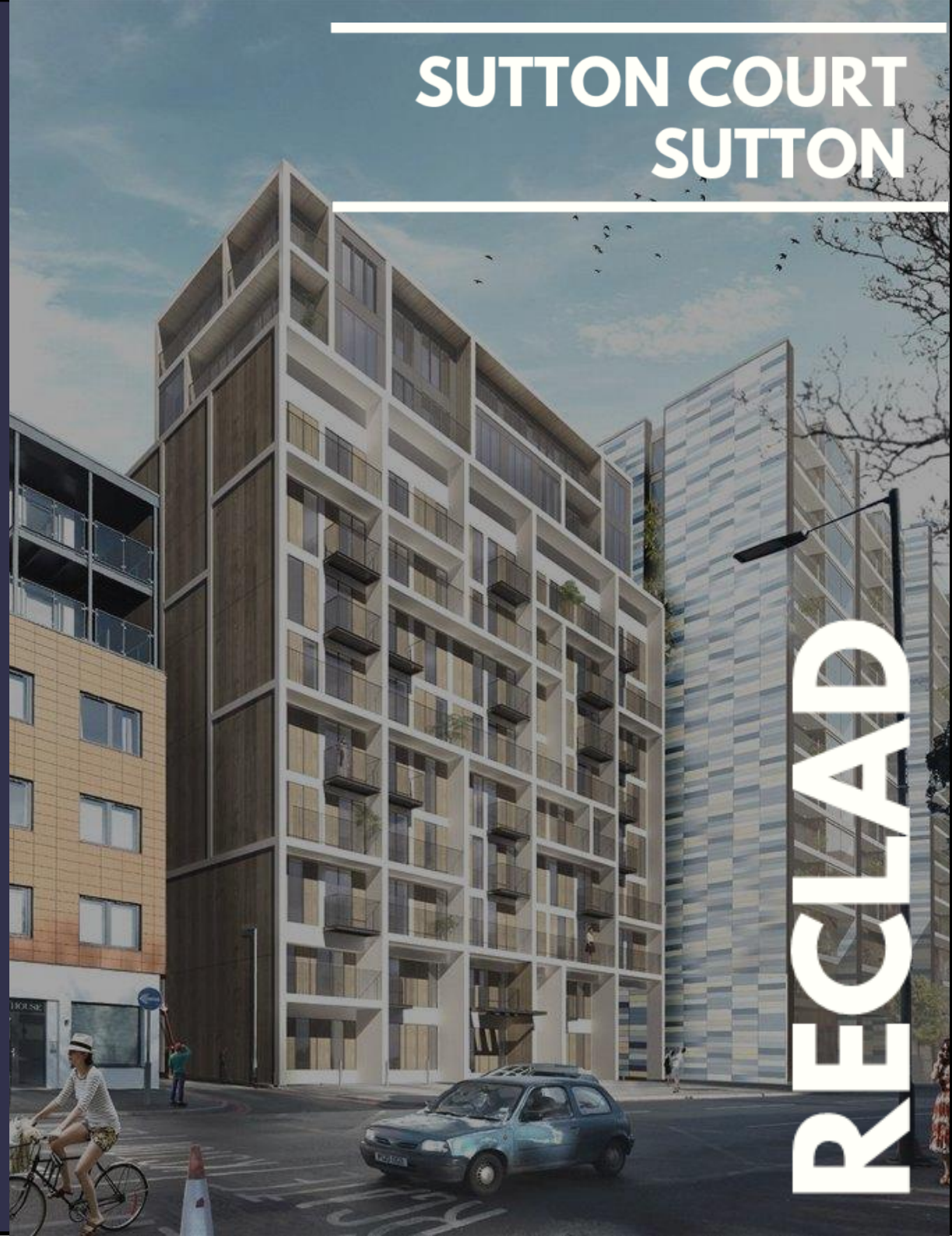
Project: Sutton Court

Size: 4000m<sup>2</sup>

Product: Render, Aluminium Cladding,  
Decking

Location: Sutton

# SUTTON COURT SUTTON



RECLAD



Project: The Circle

Size: 4000m2

Product: Render, Cladding

Location: Liverpool

Project: Reclad



# THE CIRCLE LIVERPOOL

RECLAD



Project: Moberly Leisure Centre

Size: 2000m<sup>2</sup>

Product: Replacing the Rainscreen Slab

Location: Kensall Green

Project: Reclad

# MOBERLY LEISURE CENTRE



RECLAD



Project: Metropolitan

Size: 500m2

Product: Cladding

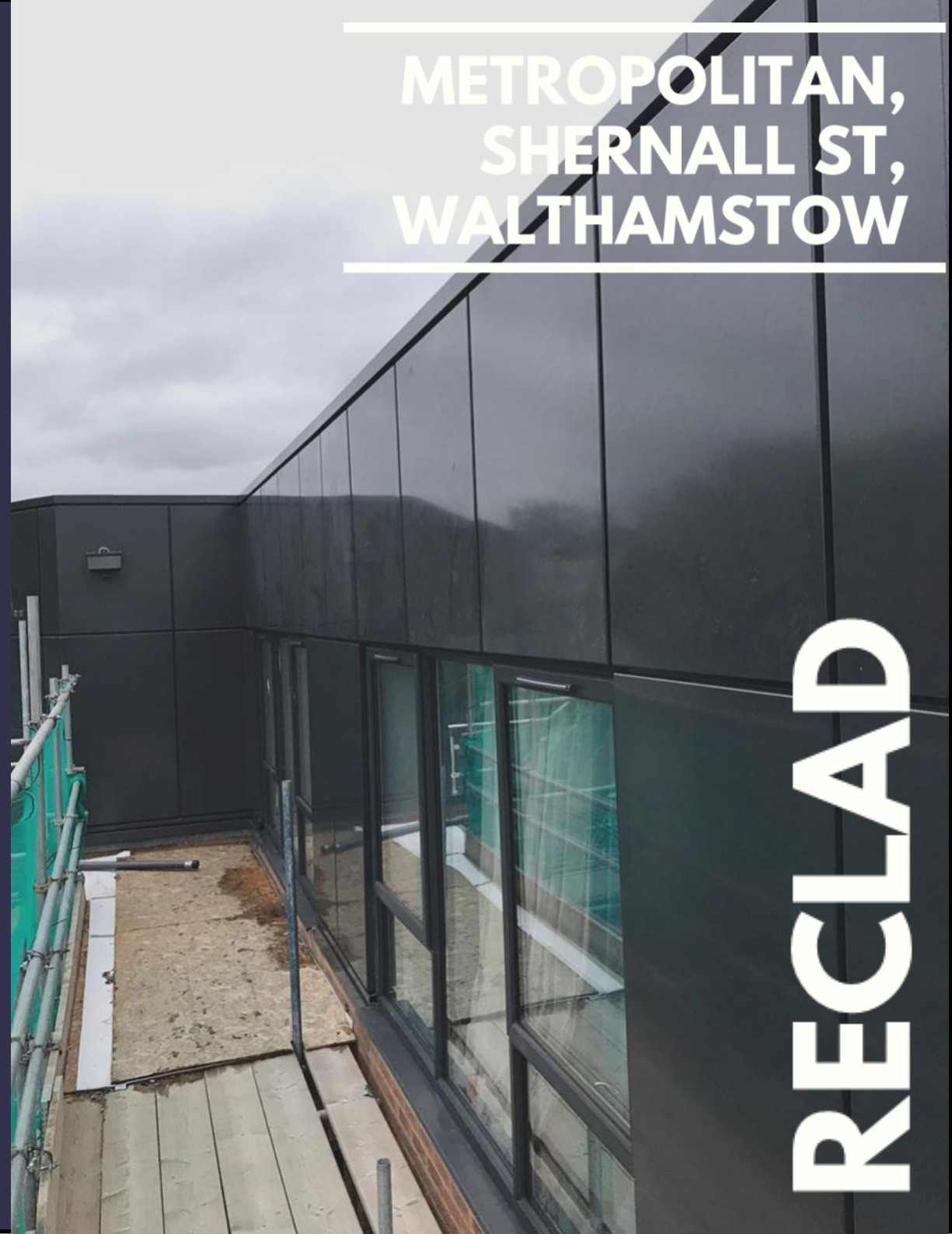
Location: Walthamstow

Project: Reclad

---

# METROPOLITAN, SHERNALL ST, WALTHAMSTOW

---



**RECLAD**



Project: Gun Wharf

Size: 500m<sup>2</sup>

Product: Cladding Shingles

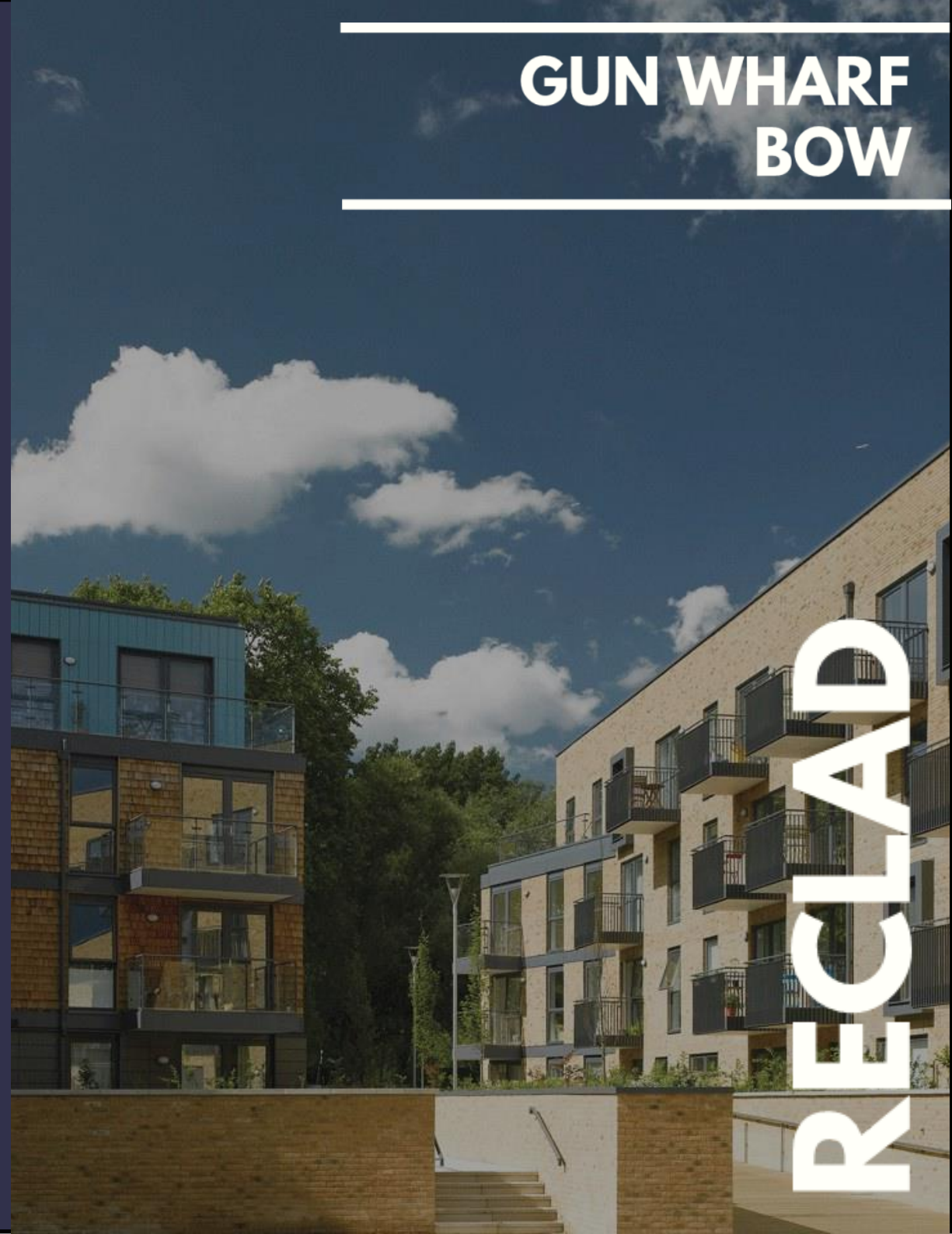
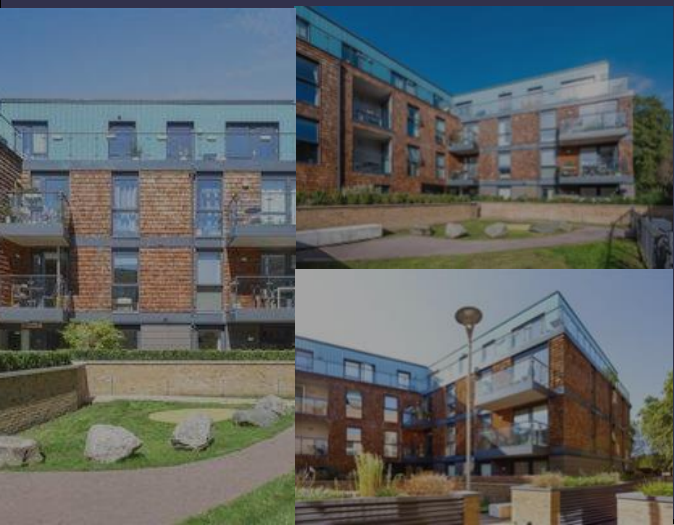
Location: Bow

Project: Reclad

---

# GUN WHARF BOW

---





Project: Malvern House

Size: 200m2

Product: Fibre Cement Cladding, Render

Location: Maidenhead

Project: Reclad



# MALVERN HOUSE MAIDENHEAD

RECLAD

theYard  
10-12 HILL STREET



Project: Blagdon House

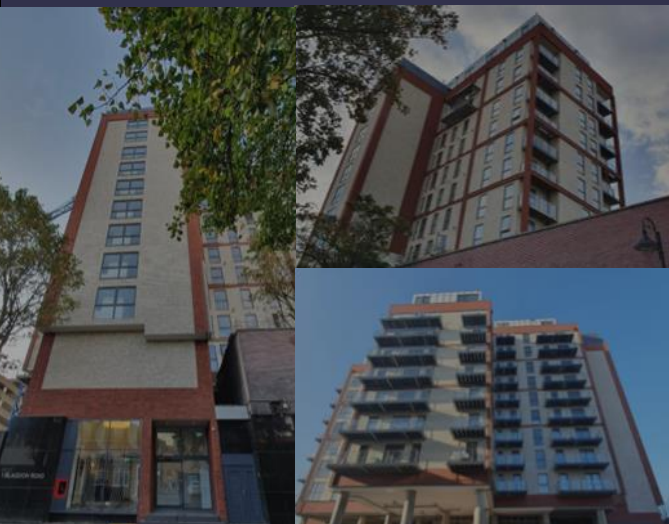
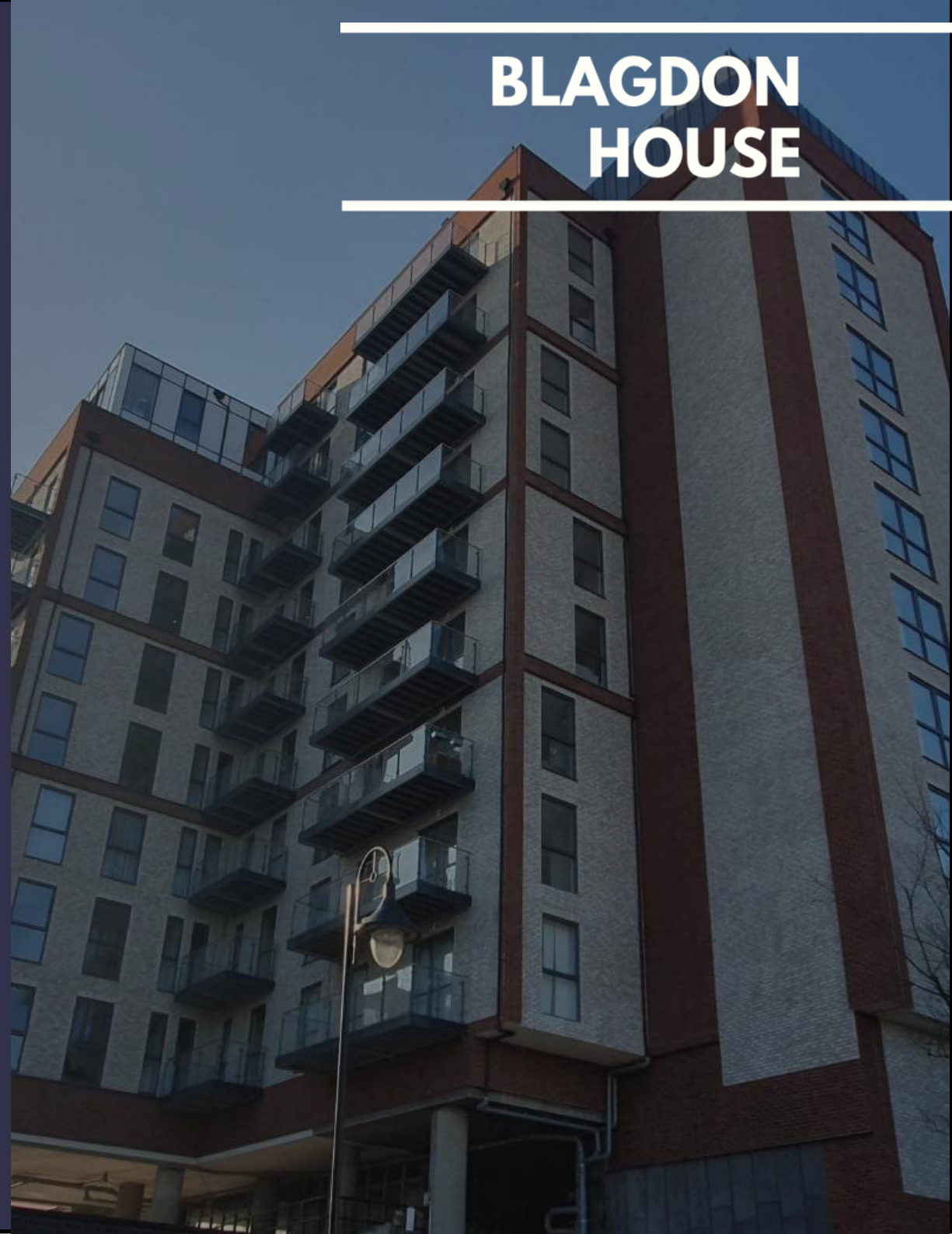
Size: 5000m<sup>2</sup>

Product: Brick Slips, Coping

Location: New Malden

Project: Office to Residential Conversion

# BLAGDON HOUSE







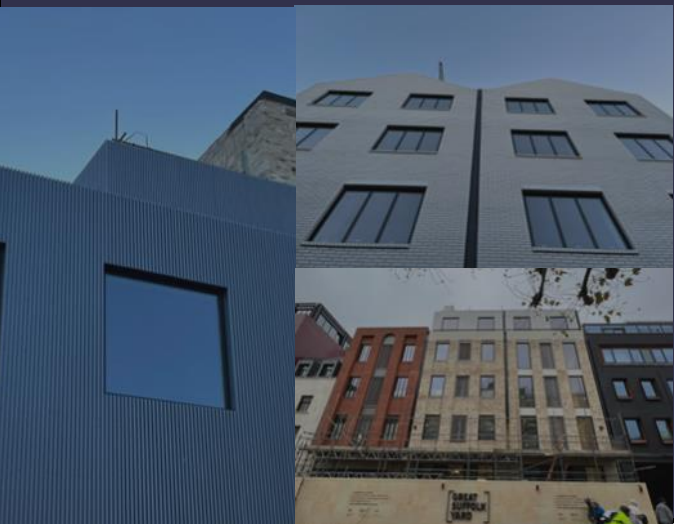
**Project:** Great Suffolk Yard

**Size:** 10,000m<sup>2</sup>

**Product:** Render, Cladding, Roofing, Green Roof, SFS, Paving Slabs, Mansafe, RWG, Coping

**Location:** Southwark

**Project:** Refurbishment





**Project:** Amersham Vale

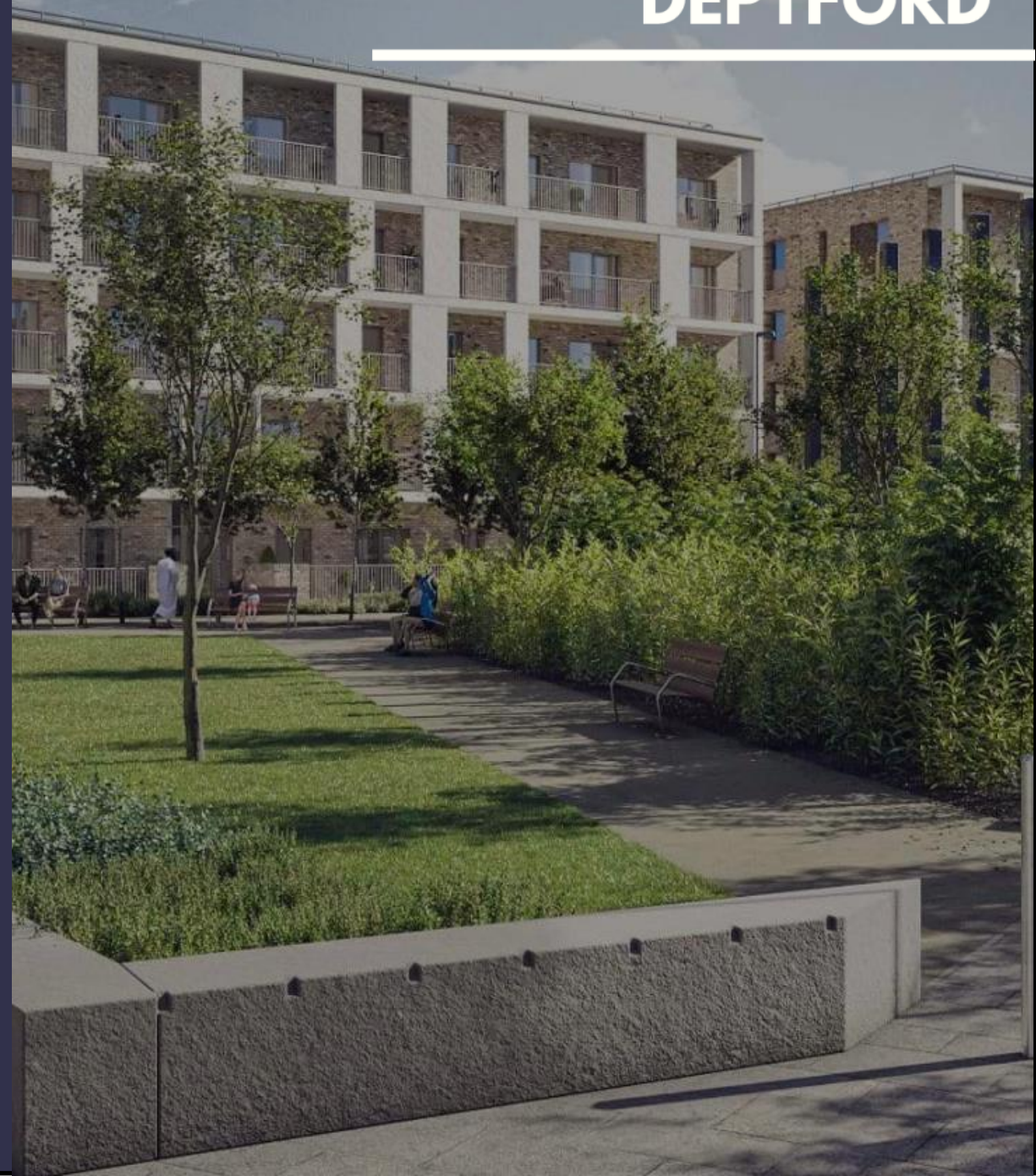
**Size:** 1000m<sup>2</sup>

**Product:** GRC, Aluminium Cladding,  
Coping

**Location:** Deptford

**Project:** New Build

# AMERSHAM VALE DEPTFORD





**Project:** Ilderton Road

**Size:** 1000m<sup>2</sup>

**Product:** Windows, Curtain Walling,  
Render, Spandrel Panels

**Location:** Southwark

**Project:** New Build

---

# ILDERTON ROAD SOUTHWARK

---





**Project:** Finchley Reform Synagogue

**Size:** 1000m<sup>2</sup>

**Product:** Render, Cladding, Windows, Doors, Window Pods

**Location:** Finchley

**Project:** New Build

# FINCHLEY REFORM SYNAGOGUE





**Project:** Bermondsey Place Sales & Marketing Suite

**Size:** 500m<sup>2</sup>

**Product:** Cladding, Roofing, Internal Stairs, Windows & Doors

**Location:** Old Kent Road

# BERMONDSEY PLACE





Project: Hilton Ealing

Size: 3000m<sup>2</sup>

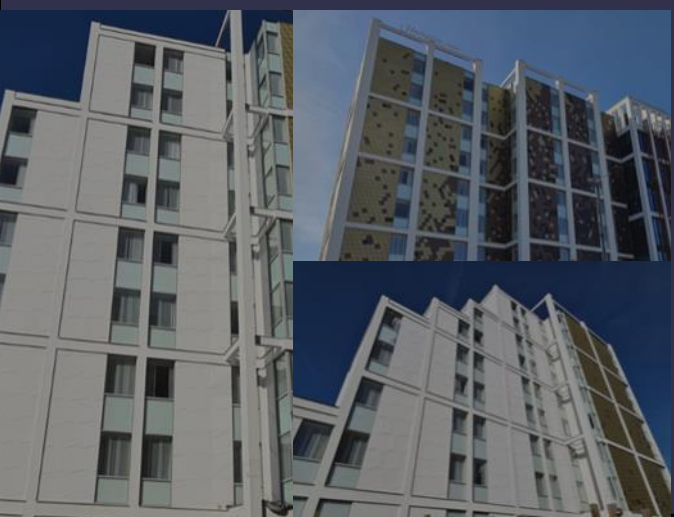
Product: Zinc Shingle, Shingle Effect

Render

Location: Ealing

Project: Hilton Hotel

# HILTON EALING





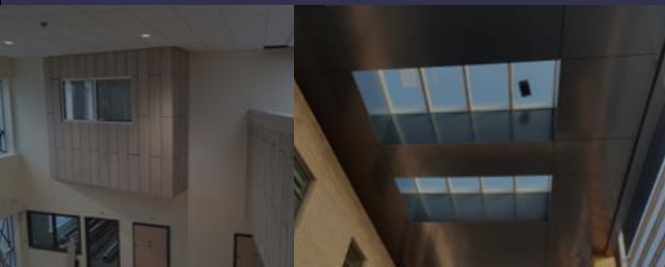
**Project:** Marjory Kinnon School

**Size:** 5000m<sup>2</sup>

**Product:** High Pressure Laminate,  
Aluminium Cladding

**Location:** Hounslow

**Project:** SEN School External &  
Internal Works)



---

# MARJORY KINNON SCHOOL

---





**Project:** Stonebridge

**Size:** 1000m<sup>2</sup>

**Product:** A1 Aluminium Cladding

**Location:** Stonebridge

**Project:** New Build Residential  
Development

# STONEBRIDGE







Project: Park Street

Size: 1800m<sup>2</sup>

Product: Cladding Effect Render

Location: Luton

Project: New Build Residential  
Development

# PARK STREET, LUTON





**Project:** Whetstone

**Size:** 1100m<sup>2</sup>

**Product:** High Pressure Laminate

Cladding, Render

**Location:** North London

**Project:** Office converted to residential

# WHETSTONE, LONDON





**Project:** Brampton Manor Academy

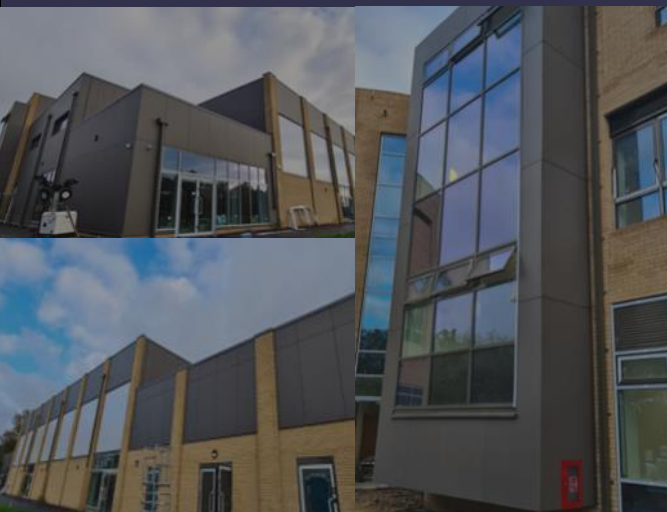
**Size:** 1300m<sup>2</sup>

**Product:** Fibre Cement Cladding,  
Polycarbonate Panels, Louvres

**Location:** East Ham

**Project:** Upper School Extension

# BRAMPTON MANOR ACADEMY, EAST HAM





Project: Wellington Street

Size: 1000m<sup>2</sup>

Product: Aluminium Cladding, Coping

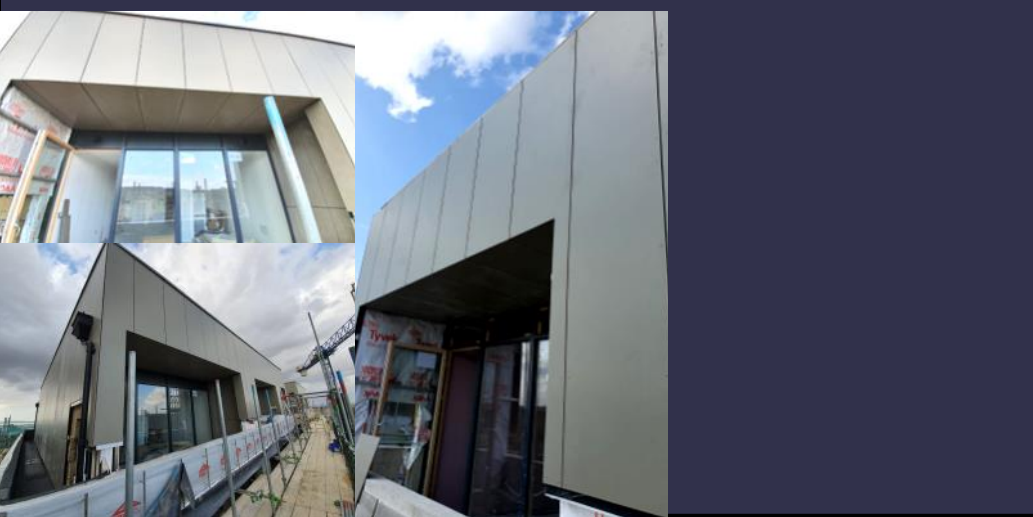
Location: Woolwich

Project: Upper School Extension

---

# WELLINGTON ST, WOOLWICH

---





**Project:** Tunnel Avenue

**Size:** 1200m<sup>2</sup>

**Product:** Brick Slips, Cladding, Render, Waterproofing, Curtain Walling

**Location:** Greenwich

**Project:** New Student Accommodation

# TUNNEL AVENUE, GREENWICH





**Project:** The Lawns

**Size:** 1500m<sup>2</sup>

**Product:** A1 Aluminium Cladding

**Location:** Hackney

**Project:** New Build Residential  
Development

# THE LAWNS





Project: University of Essex

Size: 1100m<sup>2</sup>

Product: Fibre Cement Cladding, Coping

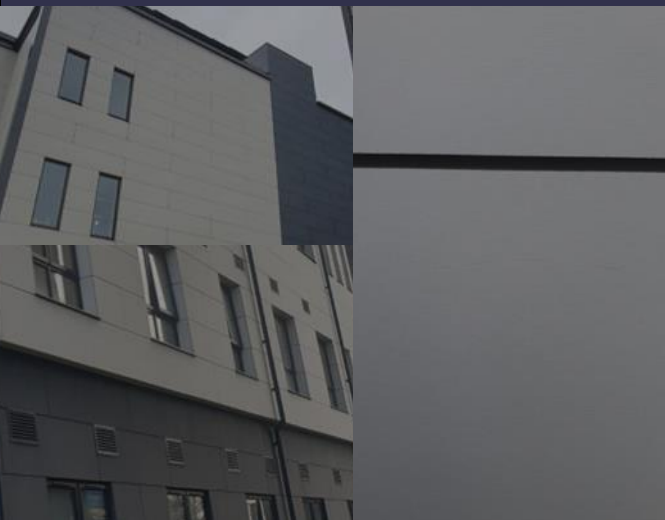
Location: Essex

Project: New Teaching Centre for  
University

---

# NEW TEACHING CENTRE, UNIVERSITY OF ESSEX

---





**Project:** Valley House

**Size:** 385m<sup>2</sup>

**Product:** Aluminium Cladding, Window  
Pods, Fins

**Location:** Woolwich

**Project:** New Build Residential

# VALLEY HOUSE, GREENWICH







Project: Standard House

Size: 3000m<sup>2</sup>

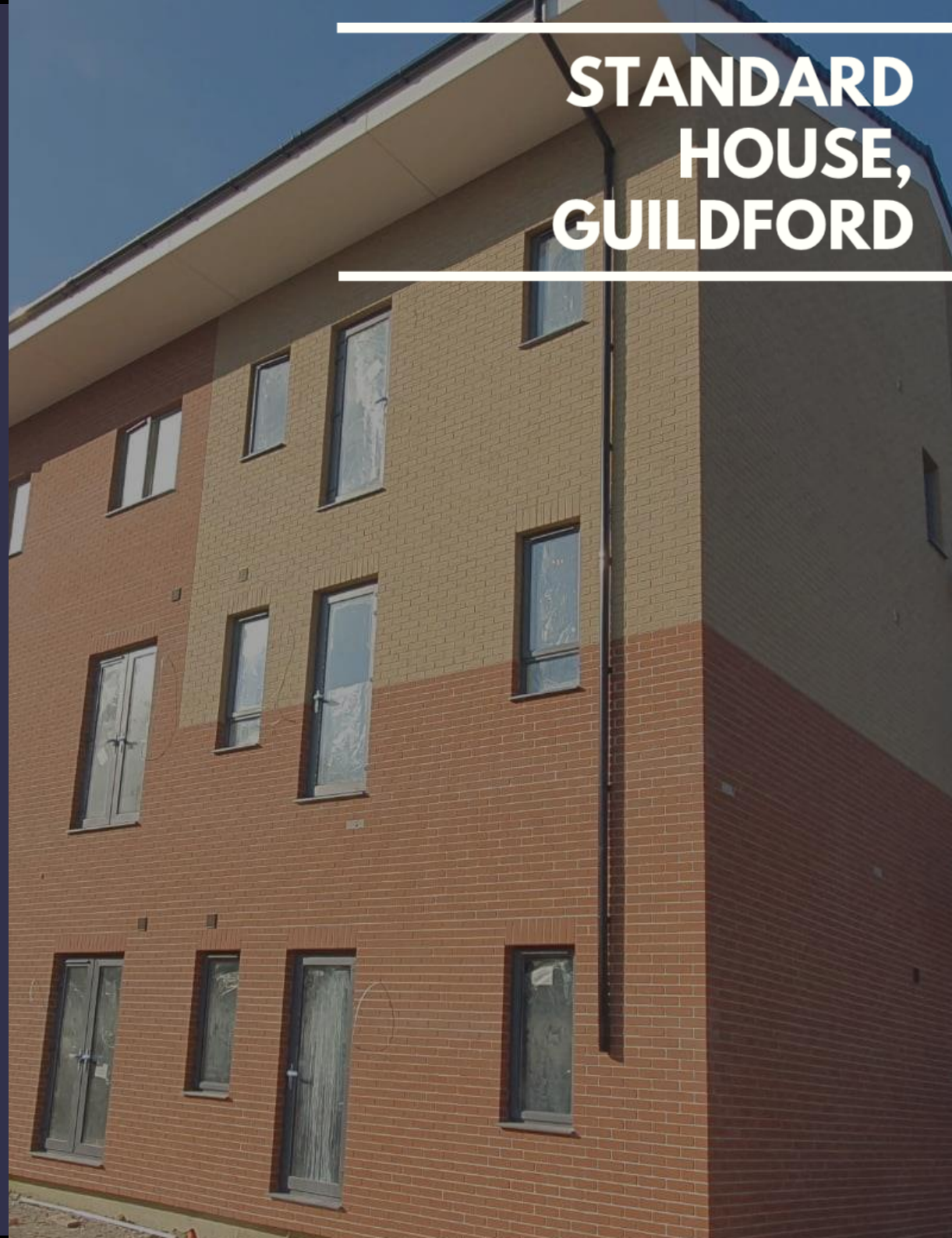
Product: Brick Slips, SFS, Coping, RWG

Location: Guildford

Project: New Build Residential

Development

# STANDARD HOUSE, GUILDFORD





**Project:** Forest Gate Community School

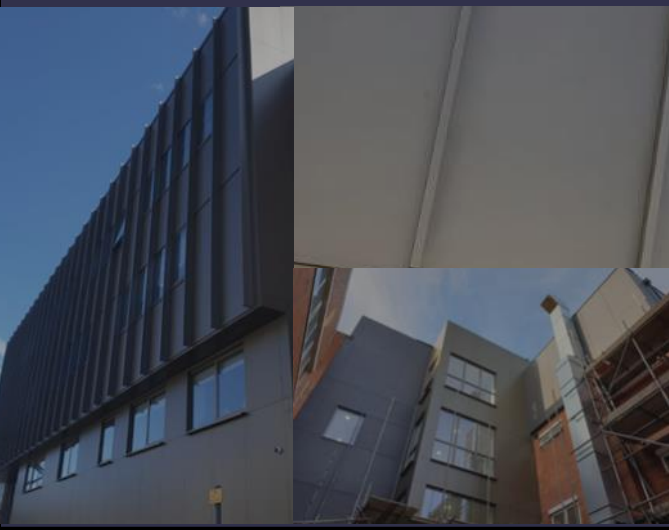
**Size:** 1100m<sup>2</sup>

**Product:** Fibre Cement, A1 Aluminium  
Cladding, Coping

**Location:** Forest Gate

**Project:** Secondary School Extension

# FOREST GATE COMMUNITY SCHOOL





Project: John Ball School

Size: 800m<sup>2</sup>

Product: Curved Render, Cladding

Location: Blackheath

Project: Primary School Extension

# JOHN BALL SCHOOL





Project: Telford Car Park

Size: 1300m<sup>2</sup>

Product: Render, Cladding

Location: Southwater

Project: New Build Car Park

# TELFORD CAR PARK





Project: Union Street

Size: 1000m<sup>2</sup>

Product: Render

Location: Luton

Project: New Build Residential  
Development





**Project:** The Walnuts

**Size:** 1000m<sup>2</sup>

**Product:** Render, Windows, Roofing, Glass Balustrade

**Location:** Orpington

**Project:** New Build

# THE WALNUTS, ORPINGTON





Project: Islington

Size: 500m<sup>2</sup>

Product: Render

Location: Islington

Project: New Build Residential  
Development

ISLINGTON





**Project:** St. George's School

**Size:** 500m<sup>2</sup>

**Product:** High Pressure Laminate Cladding,  
SFS

**Location:** Bromley, South London

**Project:** Primary School Extension

# ST GEORGE'S SCHOOL







Project: Lister School  
Size: 200m2  
Product: HPL Cladding  
Location: Newham  
Project: Refurbishment

# LISTER SCHOOL NEWHAM





Project: White Horse

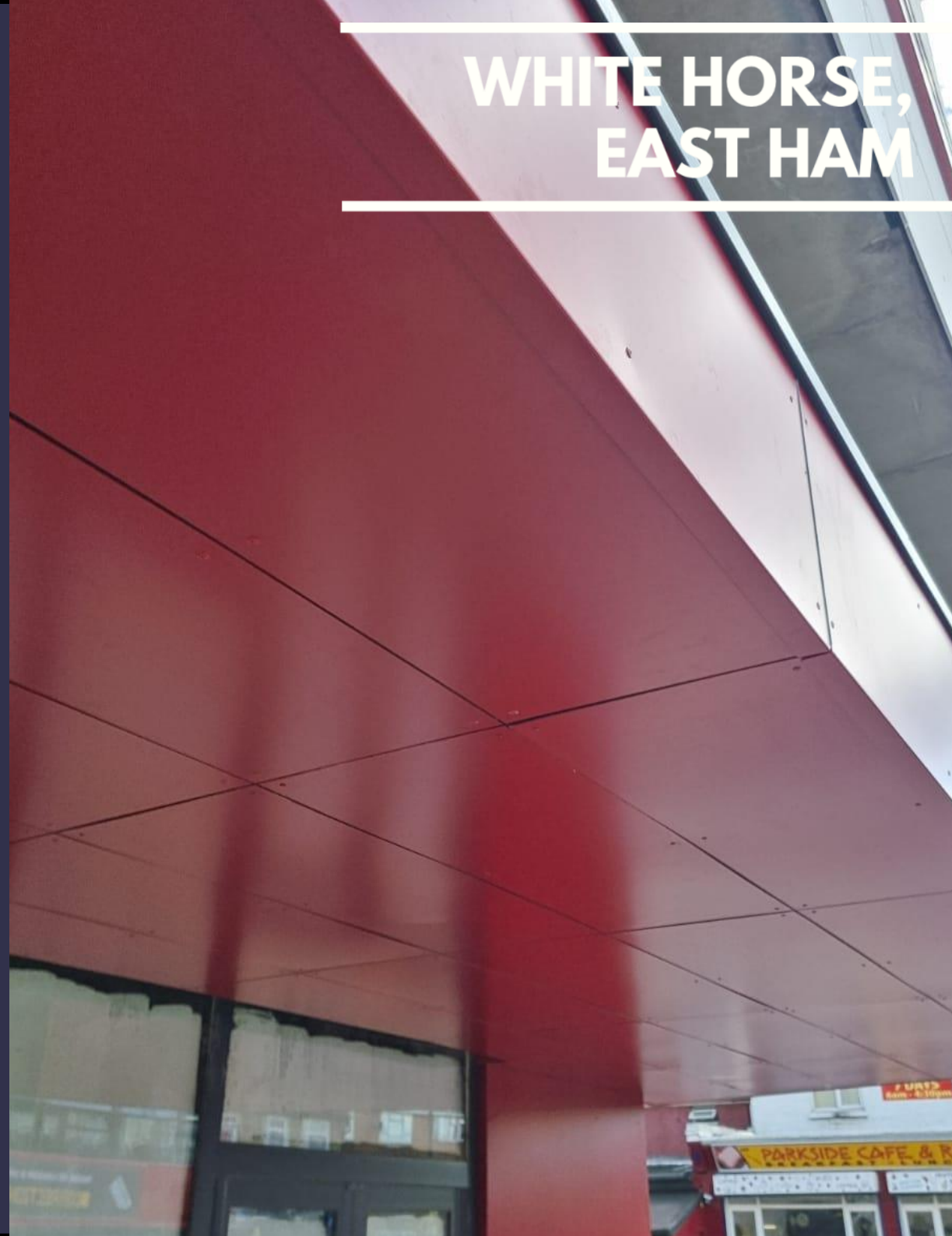
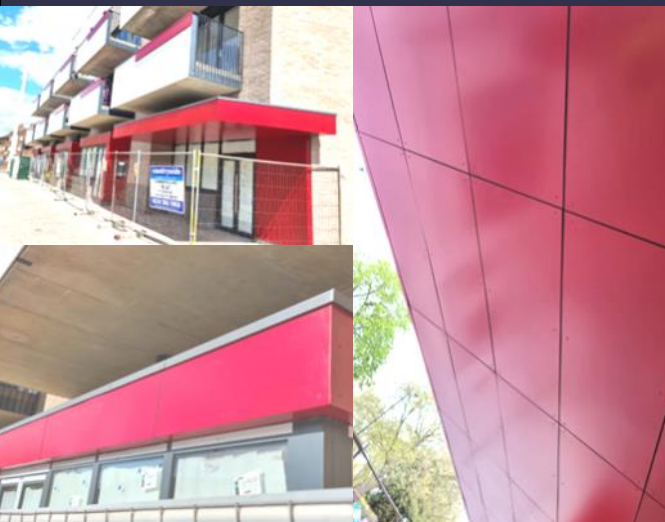
Size: 200m<sup>2</sup>

Product: Aluminum Cladding

Location: East Ham

Project: Refurbishment

# WHITE HORSE, EAST HAM





**Project:** Nelson School

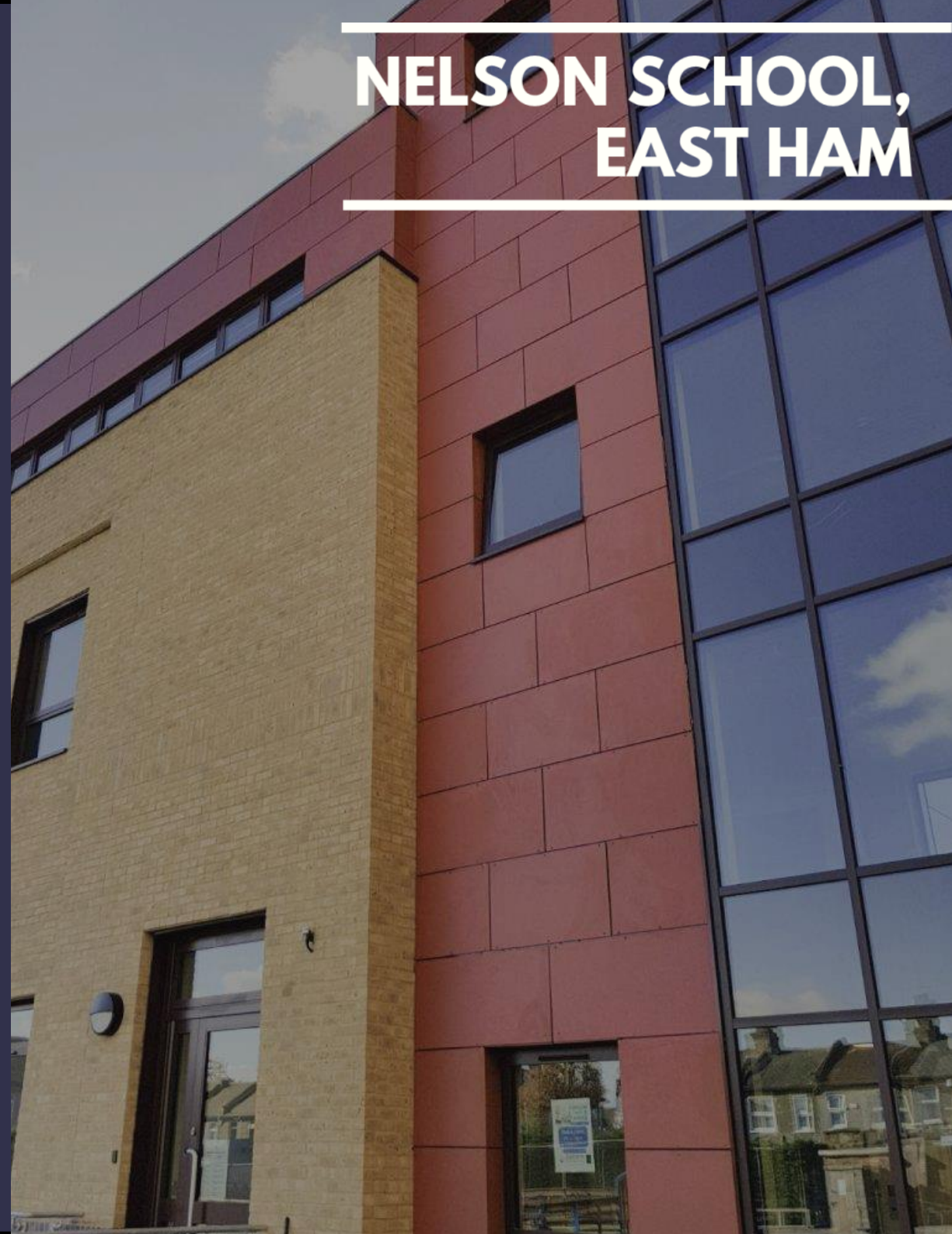
**Size:** 200m<sup>2</sup>

**Product:** Fibre Cement Cladding,  
Insulated Panels

**Location:** East Ham

**Project:** Primary School Extension

# NELSON SCHOOL, EAST HAM





Project: University of Birmingham

Size: 600m<sup>2</sup>

Product: Render

Location: Birmingham

Project: New Build



# UNIVERSITY OF BIRMINGHAM





**Project:** Pineham Barns Primary School

**Size:** 1100m<sup>2</sup>

**Product:** High Pressure Laminate

Cladding, Render

**Location:** Northampton

**Project:** New Build Primary School

# PINEHAM BARNS PRIMARY SCHOOL



# Green Facades

Project: LSE

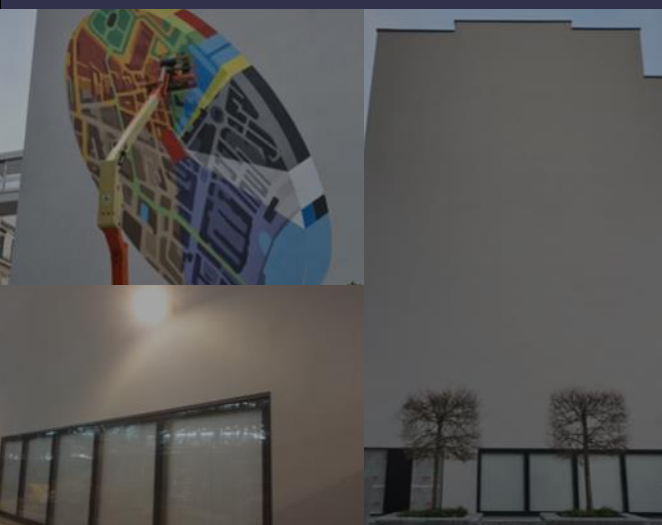
Size: 500m<sup>2</sup>

Product: Render, SFS

Location: London

Project: Repair Existing Build

## LSE, CENTRAL LONDON





Project: Beacon House

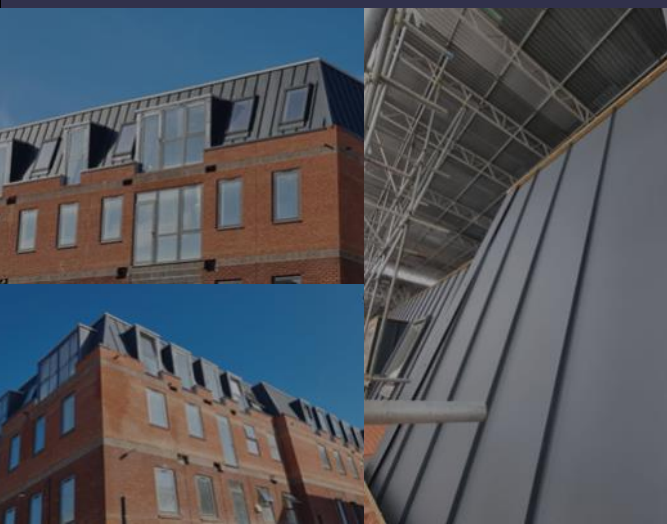
Size: 400m<sup>2</sup>

Product: Cladding, Coping

Location: Essex

Project: Refurbishment

# BEACON HOUSE, CHELMSFORD





Project: Balfron Tower

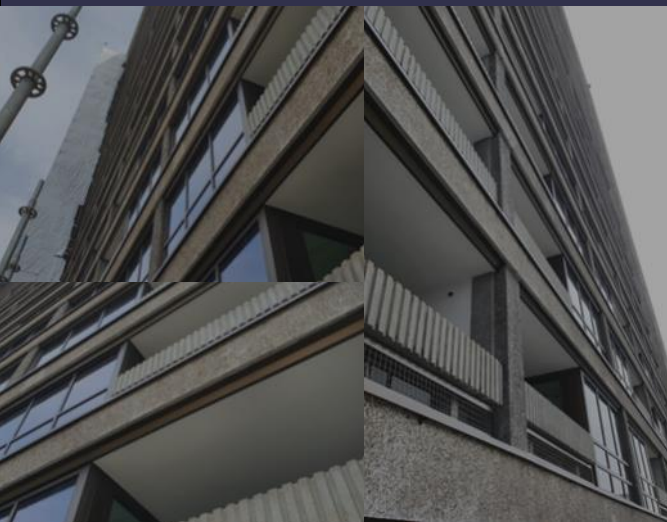
Size: 2,000m<sup>2</sup>

Product: Render to Soffits and Balcony Walls

Location: London

Project: Repair Existing Build

# BALFRON TOWER LONDON







Project: Wimbledon

Size: 100m<sup>2</sup>

Product: Ashlar Groove Render

Location: London

Project: New Build

# WIMBLEDON





Project: Derby Road

Size: 150m<sup>2</sup>

Product: Aluminium Cladding

Location: London

Project: New Build

---

# DERBY ROAD HACKNEY

---





**Project:** Brondesbury Synagogue

**Size:** 500m<sup>2</sup>

**Product:** Fibre Cement Cladding, Render

**Location:** London

**Project:** Refurbishment

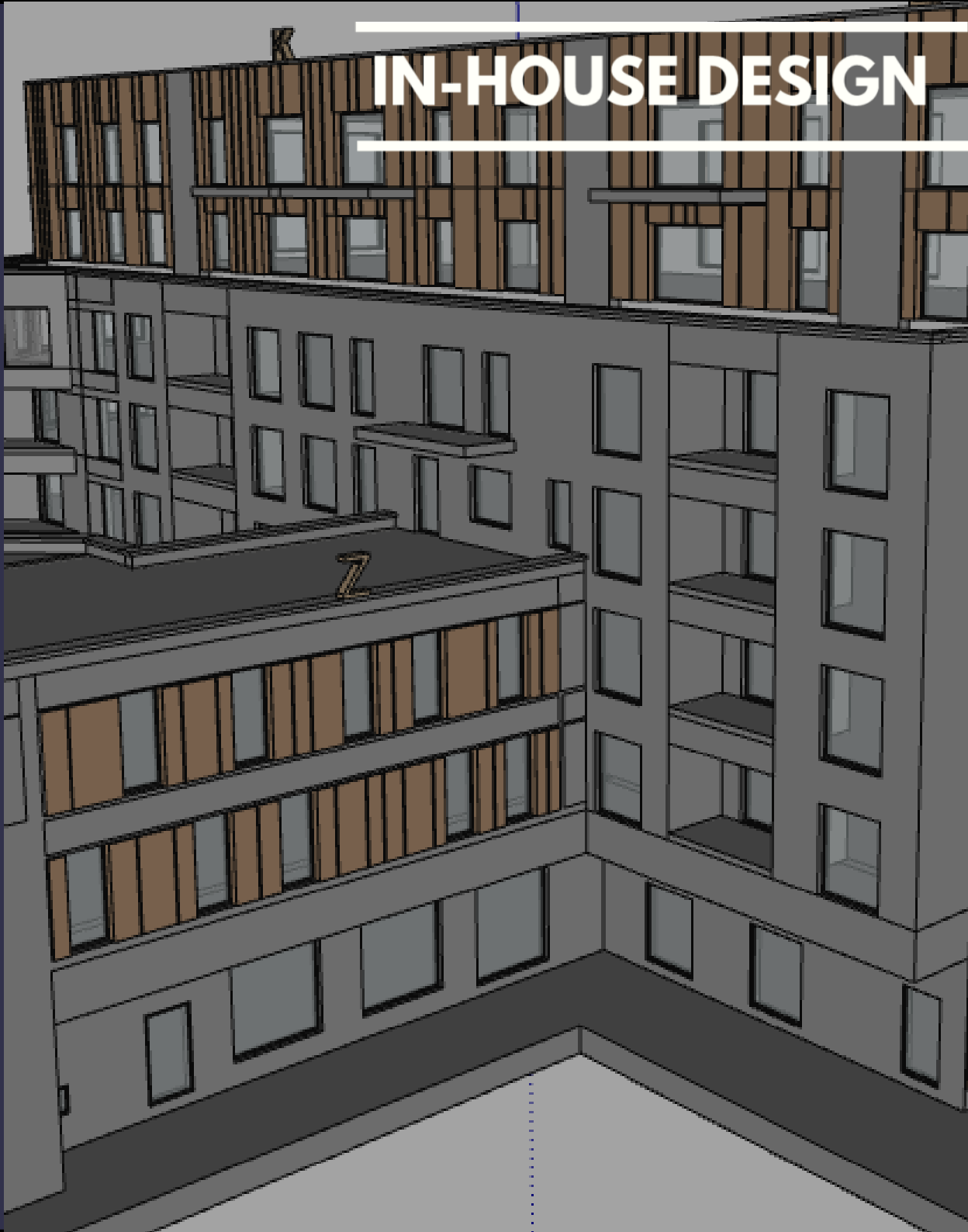
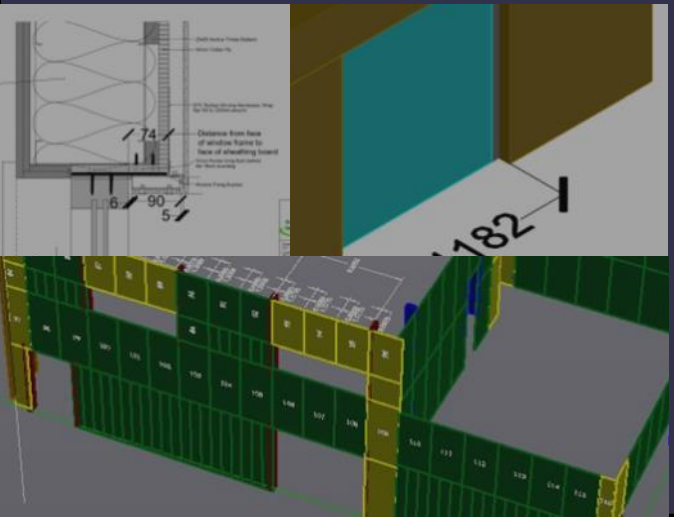
# BRONDESBUURY SYNAGOGUE





**Software:** BIM, AutoCAD, Revit, Navis Works

Tailored Design & Build to specifications;  
In-house BIM and detail design, backed by Professional Indemnity Insurance;  
Fully non-combustible systems designed and insured as well as collateral warranties issued;  
Design expertise to assist surveyors, architects and design managers.





---

# CAPABILITIES

---

## Accreditations:

- BSI ISO9001:2015;
- Constructionline Gold Member (168889);
- SSIP - Acclaim Accreditation.

## Insurances:

- £10m Employers Liability;
- £10m Public and Products;
- £10m Professional Indemnity.

## What we do:

- **Insulated render, render only and brick slips systems:** Sto, SPS Envirowall, Permarock, Licata, Wetherby, K Rend, Dryvit, Parex, K Systems, Weber, Knauf, Baunit, Eurobrick, GeBrick, Corium;
- **Cladding of all varieties:** Swiss Pearl, Eternit Equitone, Trespa, Fundermax, Valcan, Cembrit, Alucabond, Rockpanel, Sotech, Kingspan Benchmark, Everlite, Green Walling, HardiePlank, KingZip, Parklex;
- **Roofing including single ply membrane and green roof:** Sika Trocal, Bailey, Moy;
- **SFS:** Metsec, BW Industries, FrameClad;
- **Glazing & Curtain Walling:** Comar, Reynaers, Smart Systems, Schuco;
- **Fabrications:** Copings and custom aluminium



371 Woolwich Road

London

SE7 7AJ

020 8858 2030

office@greenfacades.co.uk

